

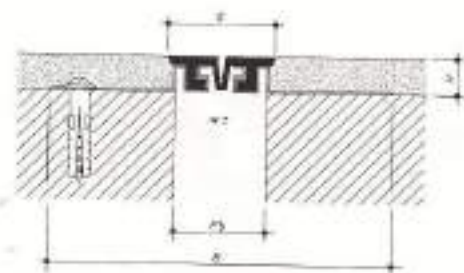
BizzAR[®]

EXPANSION JOINTS





DEXAT[®]

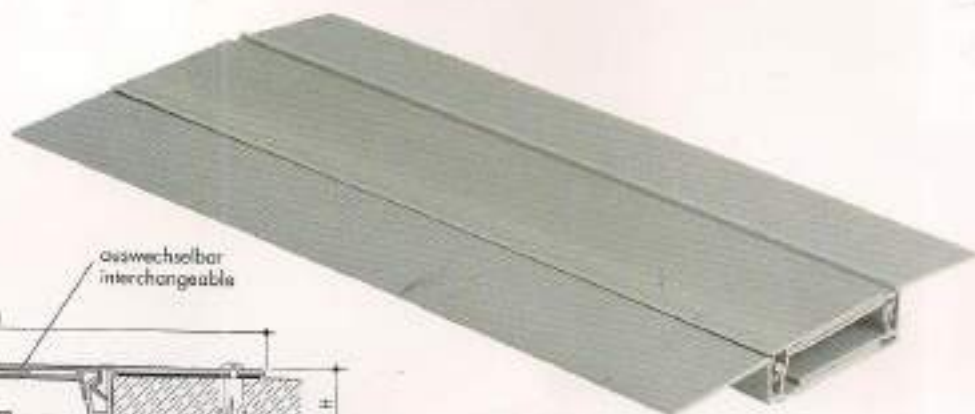


Wand - Wand
wall - wall

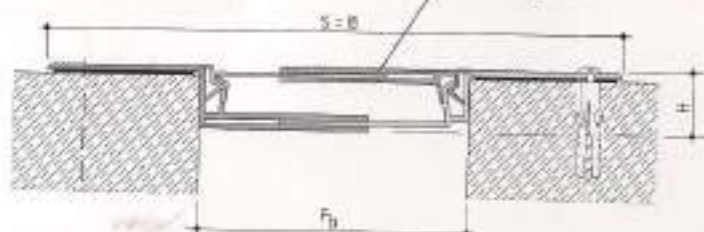
Serie 318

Putzprofil für Bewegungsfugen in Wänden und Decken
(lieferbar bis zu 50 mm Fugenbreite)

Plaster profile for movement joints in walls and ceilings
(available up to 50 mm gaps)



auswechselbar
interchangeable

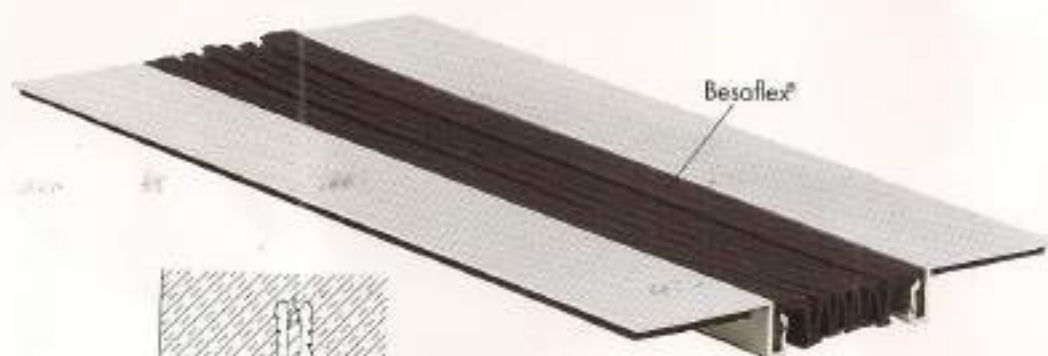


Wand - Wand
wall - wall

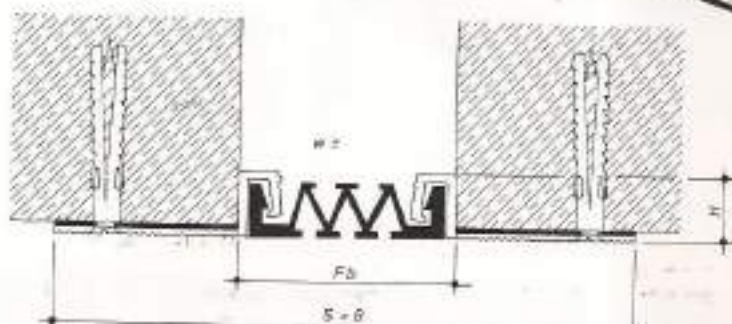
Serie 319

Wand- und Deckenprofil für Bewegungsfugen
(lieferbar bis zu 120 mm Fugenbreite)

Wall and ceiling profile for movement joints
(available up to 120 mm gaps)



Besoflex[®]

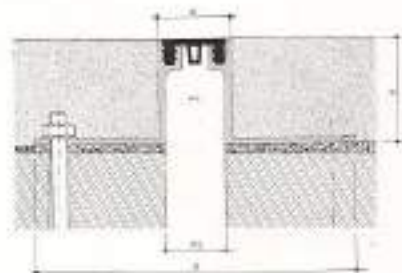


Decke - Decke
ceiling - ceiling

Serie 322

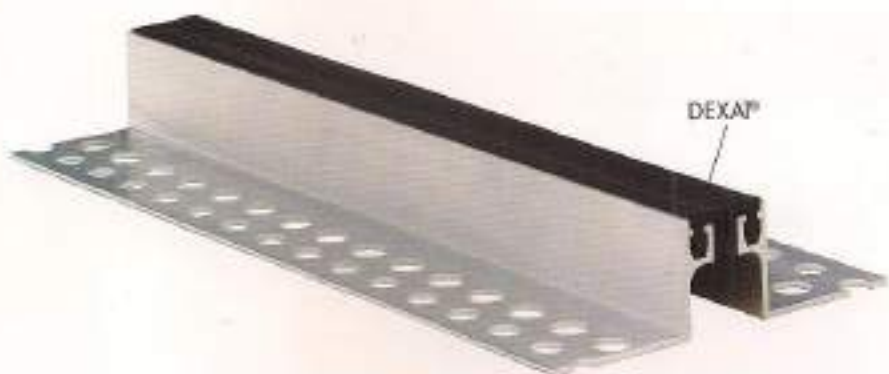
Wand- und Deckenprofil für Bewegungsfugen
(lieferbar bis zu 350 mm Fugenbreite)

Wall and ceiling profile for movement joints
(available up to 350 mm gaps)

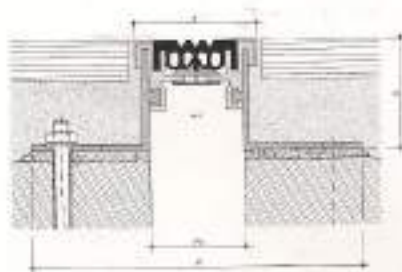


Boden – Boden
floor – floor

Serie 446



Bodenprofil für Bewegungsfugen (lieferbar bis zu 100 mm Fugenbreite)
Floor profile for movement joints (available up to 100 mm gaps)

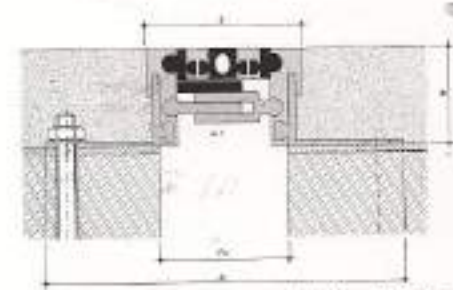


Boden – Boden
floor – floor

Serie 446/cPo



Bodenprofil mit Edelstahlkappen für Bewegungsfugen (lieferbar bis zu 50 mm Fugenbreite)
Floor profile with stainless steel caps for movement joints (available up to 50 mm gaps)

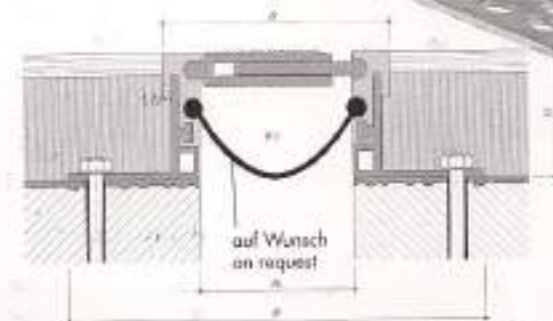


Boden – Boden
floor – floor

Serie 426/G



Bodenprofil für Bewegungsfugen (lieferbar bis zu 310 mm Fugenbreite)
Floor profile for movement joints (available up to 310 mm gaps)

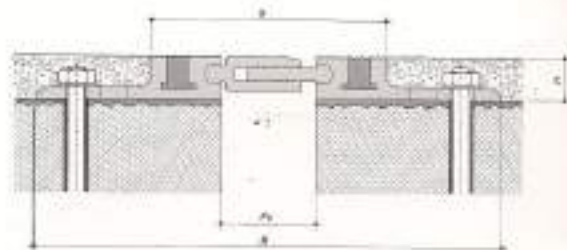


Boden – Boden
floor – floor

Serie 426/ALR



Bodenprofil – Vollmetall – für Bewegungsfugen (lieferbar bis zu 340 mm Fugenbreite)
Floor profile – all metal – for movement joints (available up to 340 mm gaps)

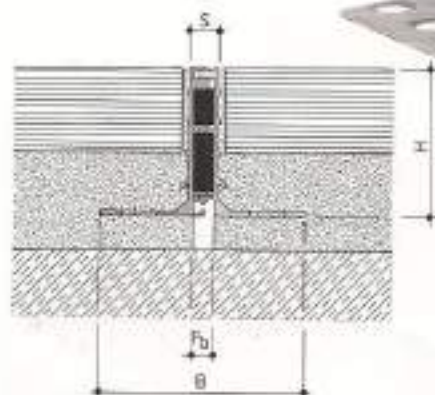
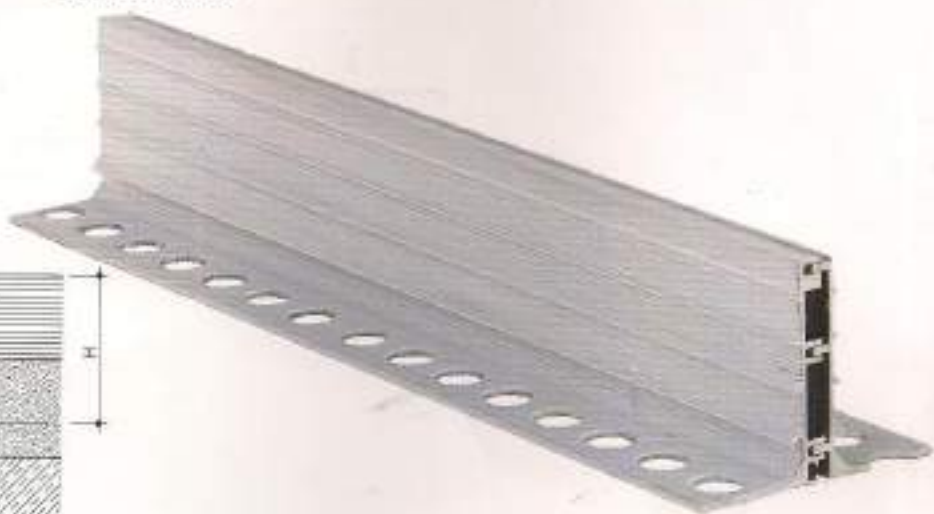


Bodenprofil - Vollmetall - für Bewegungsfugen
(lieferbar bis zu 340 mm Fugenbreite)

Floor profile - all metal - for movement joints
(available up to 340 mm gaps)

Boden - Boden
floor - floor

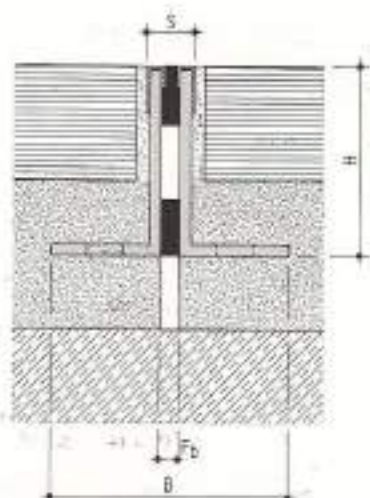
Serie 427/ALR



Bodenprofil - Vollmetall - für Feldbegrenzungsfugen
Floor profile - all metal - for field limitation joints

Boden - Boden
floor - floor

Serie 490/AL



Bodenprofil - Kunststoff - mit Metallkappen für Feldbegrenzungsfugen
Floor profile - plastic - with metal caps for field limitation joints

Boden - Boden
floor - floor

Serie 495/P-VA



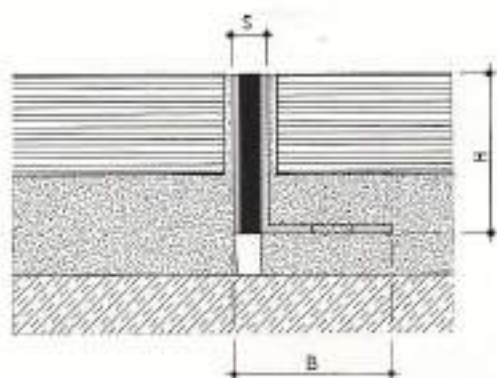
710-AL



710-M5



710/B-AL



Boden – Boden
Floor – floor

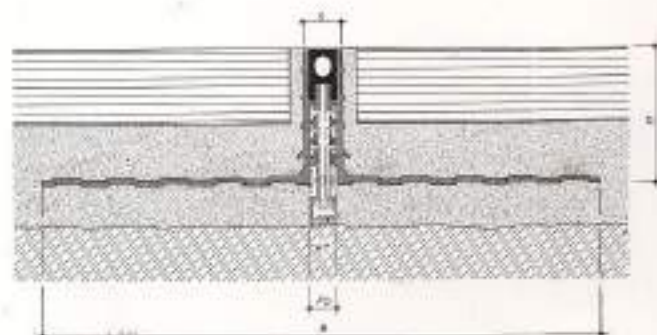
Serie 710/E-AL



Bodenprofil – abschleifbar – für Feldbegrenzungsfugen
(Aluminium, Edelstahl oder Messing)
Floor profile – polishable – for field limitation joints
(aluminium, stainless steel or brass)

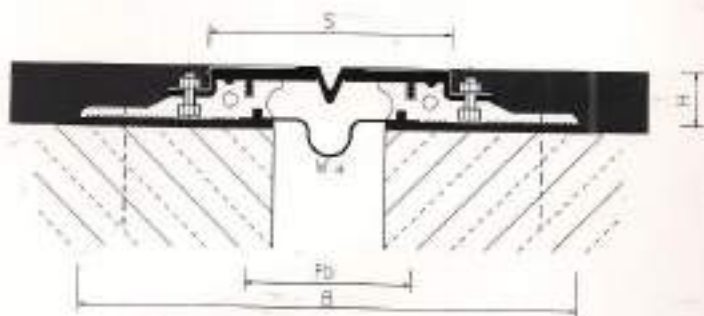
Bodenprofil – höhenverstellbar – für Feldbegrenzungsfugen
(auf Wunsch mit Edelstahlkappen)

Floor profile – height adjustable – for field limitation joints
(with stainless steel caps on request)



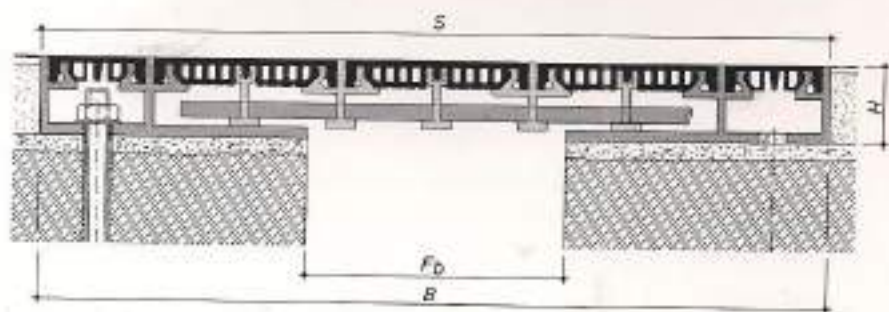
Boden – Boden
Floor – floor

Serie 497/AL



Serie 500/Na

Bodenprofil wasserdichte Bewegungsfugen
(lieferbar bis zu 50 mm Fugenbreite)
Floor profile for watertight movement joints
(available up to 50 mm gaps)



Boden – Boden
floor – floor

Serie 840

Bodenprofil für Erdbebengebiete
(lieferbar bis zu 400 mm Fugenbreite)
Floor profile for earthquake areas
(available up to 400 mm gaps)

BIZZAR EXPANSION JOINTS

Manufactured by : DEFLEX Germany

Import & Distributor by:

BIZZAR INTERIORS PVT. LTD.

CB-195, Ring Road, Naraina, New Delhi-110 028

Telefax : 91-11-25774318, 25778957, 25778093, 25778357

Email : info@bizzarinteriors.com