

MOLDO[®]

Bicycle & Roller Skating

"Play safe with Innovation"



MADE IN INDIA



- Bicycle Tracks
- Roller Skating Paths

www.moldosports.com

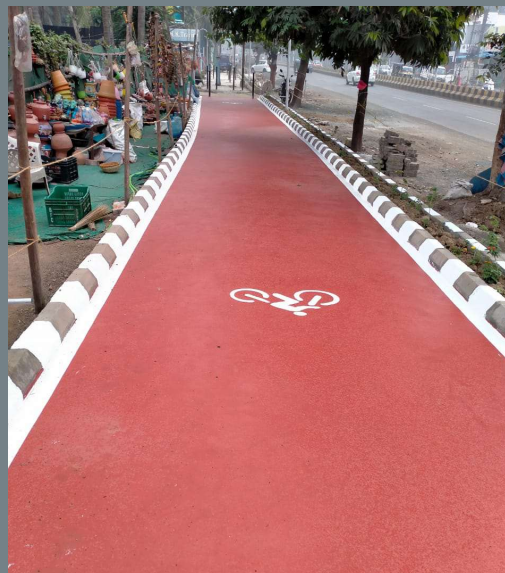
MOLDO " CYTRO" CYCLE TRACK FLOORING SYSTEM

A cycle track is an exclusive bike facility that combines the user experience of a separated path with the on-street infrastructure of a conventional bike lane. A cycle track is physically separated from motor traffic and distinct from the sidewalk. Cycle tracks have different forms but all share common elements—they provide space that is intended to be exclusively or primarily used for bicycles, and are separated from motor vehicle travel lanes, parking lanes, and sidewalks. In situations where on-street parking is allowed cycle tracks are located to the curb-side of the parking (in contrast to bike lanes).

Cycle tracks may be one-way or two-way, and may be at street level, at sidewalk level, or at an intermediate level. If at sidewalk level, a curb or median separates them from motor traffic, while different pavement color/texture separates the cycle track from the sidewalk. If at street level, they can be separated from motor traffic by raised medians, on-street parking, or bollards. By separating cyclists from motor traffic, cycle tracks can offer a higher level of security than bike lanes and are attractive to a wider spectrum of the public.



CYTRO flooring is made with acrylic polymers to take the load of roller skates and bicycle tyres aberration.



- Environment friendly
- Weather resistant
- Stable colours
- UV resistant
- Easy clean
- Anti skid



Technical Specification

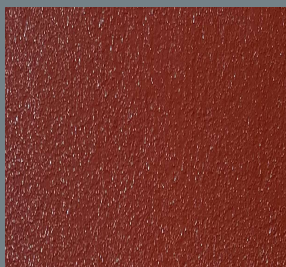
S no	Description	Test standards	Result
1	Abrasion resistance (CS-10; 500 g & 10000 Cycles)	ASTM D-4060-19	PASS
2	Gross Calorific Value (GCV)	Bomb Calorie Meter	3.87 Kcal/g
3	Volatile organic Content (VOC)	ASTM-D-2369	49 g/L
4	Fire Retardant	ASTM-D-6413	Class A
5	Toxicity of smoke produce on fire	ASTM-D-11	Non -Toxic

APPLICATION METHODOLOGY

1. Cleaning of Surface with wire brush and air blower to remove the oil and dust particles from base surface.
2. Applying of Acrylic Primer with roller or brush.
3. Applying of base screed leveling with trowel / wiper.
4. Applying of colored screed leveling with trowel / wiper.
5. Applying of line marking and cycle logo with white colored screed.
6. Applying of penetration primer with roller or brush.
7. Applying of Antiskid Hybrid Epoxy coating with roller.



Colours, you can choose



CY 1001



CY 1003



CY 1002



CY 1004

Advance water born ecco-friendly cushion tracks

Anti skid • UV resistance • Water impermeable • Ecco Friendly



EASY CLEAN



ANTI SLIP



ECO FRIENDLY



RESISTANT



CYTRO

TRACKS

CYTRO is the perfect solution for cycle schemes & Skating rings on both urban & rural networks, & provides a durable, maintenance-free, colourfast surface that can be trafficked sometime after application. The skid-resistant surface enhances the safety of the cyclist by improving braking distances through increased surface friction.

VG SALES

CB-195, Ring Road, Naraina , New Delhi -110028, INDIA. Ph : 011-25778093,
Cell : +91-9810037410, Email : vivekgupta@vgsales.in, www.moldosports.com